

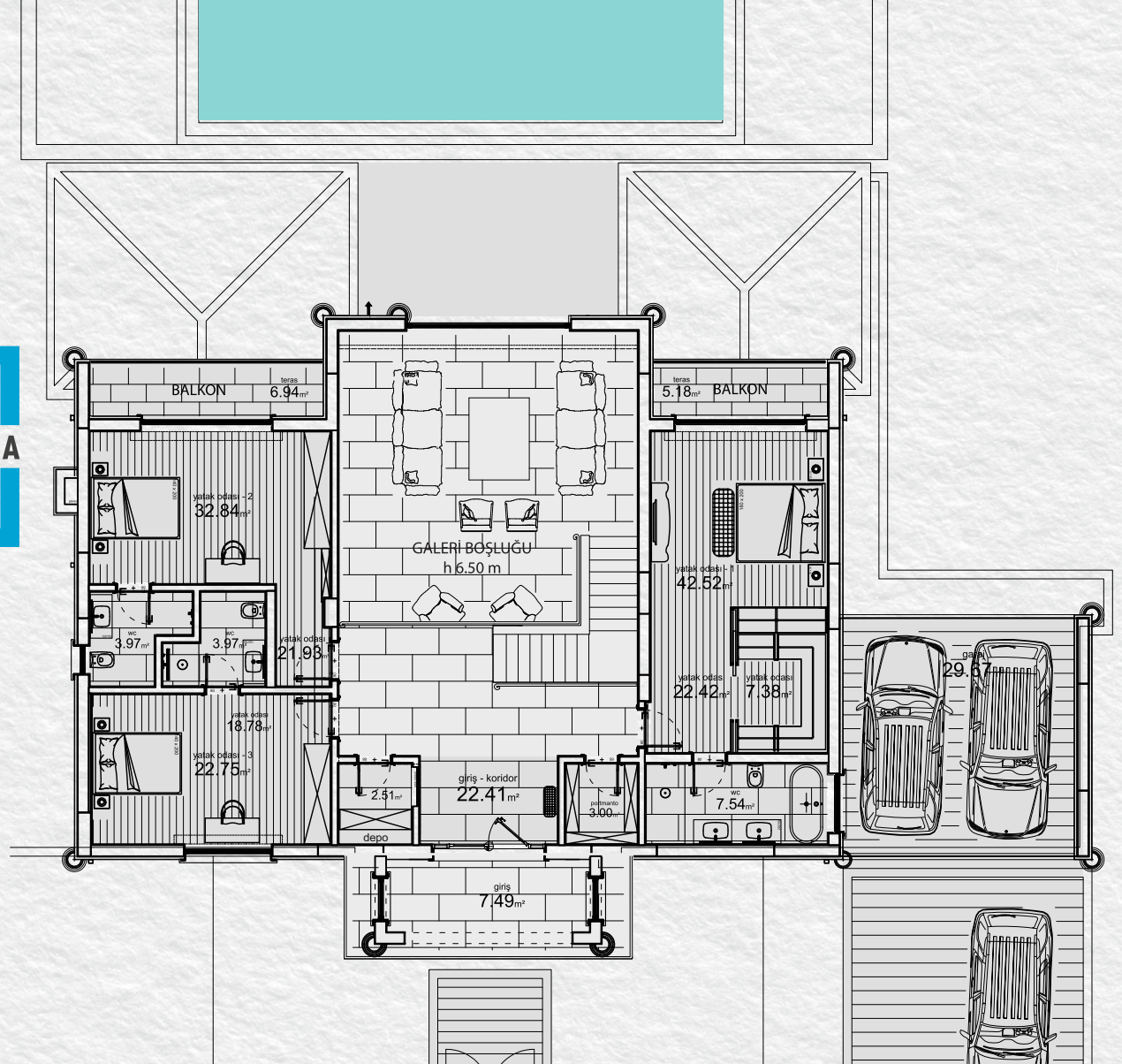
# Yasmin 9+1

ORTALAMA BRÜT ARSA ALANI  
1.750 m<sup>2</sup> - 1.850m<sup>2</sup>  
GİRİŞ KAT PLANI



<b>EBEVEYN YATAK ODASI</b>	<b>42,52 m<sup>2</sup></b>
YATAK ODASI (6)	22,42m <sup>2</sup>
GIYİNME ODASI (7)	7,38m <sup>2</sup>
BANYO	7,54m <sup>2</sup>
BALKON	5,18m <sup>2</sup>
<b>YATAK ODASI</b>	<b>32,84 m<sup>2</sup></b>
YATAK ODASI (8)	21,93m <sup>2</sup>
BANYO	3,97m <sup>2</sup>
BALKON	6,94m <sup>2</sup>
<b>YATAK ODASI</b>	<b>22,75 m<sup>2</sup></b>
YATAK ODASI (9)	18,78m <sup>2</sup>
BANYO	3,97m <sup>2</sup>
<b>RÜZGARLIK</b>	<b>7,49 m<sup>2</sup></b>
<b>GİRİŞ HOLÜ - ANTRE</b>	<b>22,41 m<sup>2</sup></b>
<b>PORTMANTO-AYAKKABILIK-DEPO</b>	<b>5,51 m<sup>2</sup></b>
<b>HAVUZ</b>	<b>56,40 m<sup>2</sup></b>
<b>GARAJ</b>	<b>29,67 m<sup>2</sup></b>
<b>VERANDALAR</b>	<b>42,76 m<sup>2</sup></b>
VERANDA 1	24,07m <sup>2</sup>
VERANDA 2	18,69m <sup>2</sup>
<b>TERAS ALANI</b>	<b>125,38 m<sup>2</sup></b>
AVLU	21,98m <sup>2</sup>
TERAS ALANI	23,02m <sup>2</sup>
HAVUZ TERAS	43,82m <sup>2</sup>
SU DEPOSU+SARNIÇ+DENGE TANKI	26,86m <sup>2</sup>
HAVUZ MEKANİK ODA	9,70m <sup>2</sup>

**İKİ  
KATTA  
VİLLA**



NET ÖLÇÜM ALANLAR TOPLAMI 651,15 m<sup>2</sup>

**BRÜT ALAN 707,55 m<sup>2</sup>**

# Yasmin 9+1

ORTALAMA BRÜT ARSA ALANI  
1.750 m<sup>2</sup> - 1.850m<sup>2</sup>  
BAHÇE KATI PLANI

<b>SALON</b>		<b>113,88 m<sup>2</sup></b>
SALON	61,45m <sup>2</sup>	
YEMEK ODASI (1)	23,26m <sup>2</sup>	
ŞÖMİNELİ OTURMA ODASI (2)	27,23m <sup>2</sup>	
MERDİVEN ALTI DEPO	1,94m <sup>2</sup>	
<b>GALERİ BOŞLUĞU</b>		<b>50,39 m<sup>2</sup></b>
<b>MUTFAK</b>		<b>54,91 m<sup>2</sup></b>
YAŞAM ODASI (3)	23,76m <sup>2</sup>	
MUTFAK	24,23m <sup>2</sup>	
KİLER	6,92m <sup>2</sup>	
<b>MİSAFİR YATAK ODASI</b>		<b>16,66 m<sup>2</sup></b>
YATAK ODASI (4)	13,47m <sup>2</sup>	
BANYO	3,19m <sup>2</sup>	
<b>HİZMETLİ BÖLÜMÜ</b>		<b>24,50 m<sup>2</sup></b>
YATAK ODASI (5)	11,13m <sup>2</sup>	
BANYO	2,35m <sup>2</sup>	
ÇAMAŞIR ODASI	7,37m <sup>2</sup>	
MEKANİK ODA	3,65m <sup>2</sup>	
<b>MİSAFİR BANYOSU</b>		<b>3,08 m<sup>2</sup></b>

NET ÖLÇÜM ALANLAR TOPLAMI 651,15 m<sup>2</sup>

**BRÜT ALAN 707,55 m<sup>2</sup>**



**iki  
KATTA  
VİLLA**

